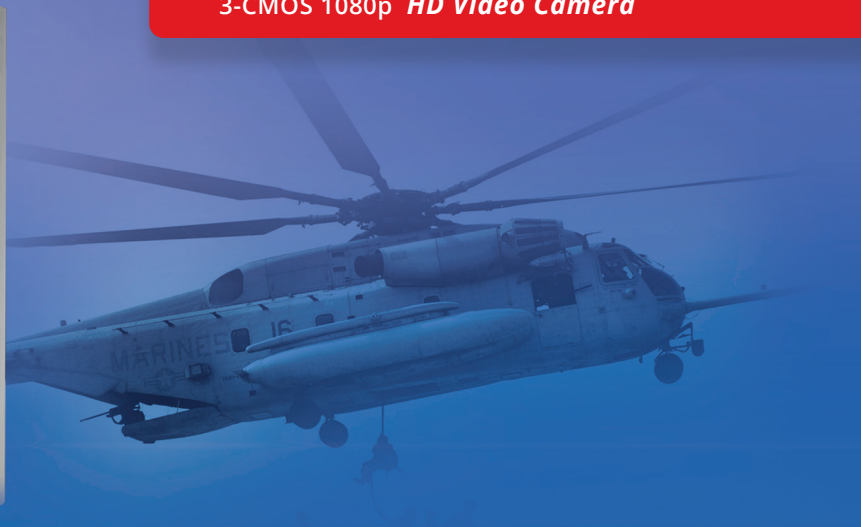
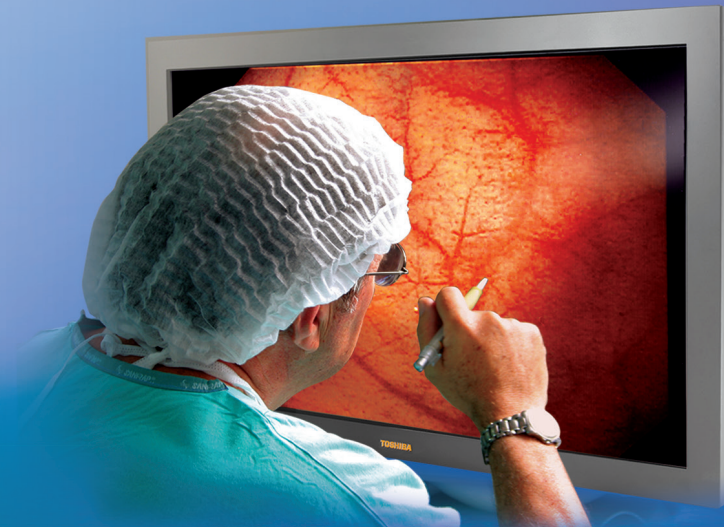


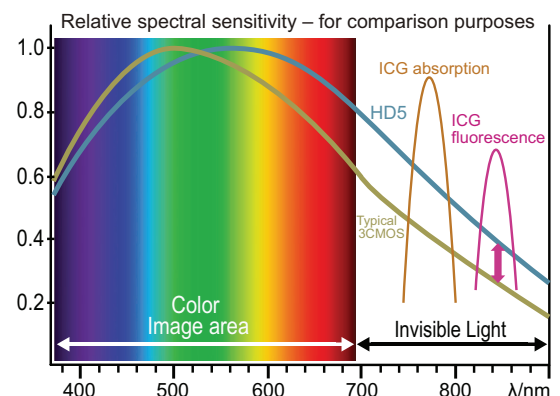
## IK-HD5

3-CMOS 1080p HD Video Camera



CANON MEDICAL COMPONENTS EUROPE B.V. Video Sensing Devices introduces the latest 3-CMOS camera innovation, a progressive-scan full-HD 1080p/1080i video camera featuring 3G-SDI/HD-SDI and DVI-D or USB 3.0 and DVI-D outputs and removable optical low pass filter (OLPF) for dual-mode imaging applications switchable between visible light and near-infrared visualization.

The IK-HD5U configuration includes advanced features particularly well suited for microscopy applications including USB 3.0 output, freeze frame and longer exposure up to 1 second (60 frames). This HD camera can be used for any HD video application as well as applications which use fluorescing agents. While the IK-HD5 is not an approved IEC60601 medical device, its imaging capabilities are ideal as a component of surgical microscopy, endoscopy, IR inspection and defense imaging systems.



Incorporating Canon's innovative three-chip technology, the IK-HD5 provides approximately 3dB increased sensitivity in the near-infrared spectrum through 700-870 nm. When equipped with the appropriate optics and filters, the IK-HD5 can be used for both visible light and near IR imaging applications such as indocyanine green (ICG) and other fluorescing agents.

# IK-HD5

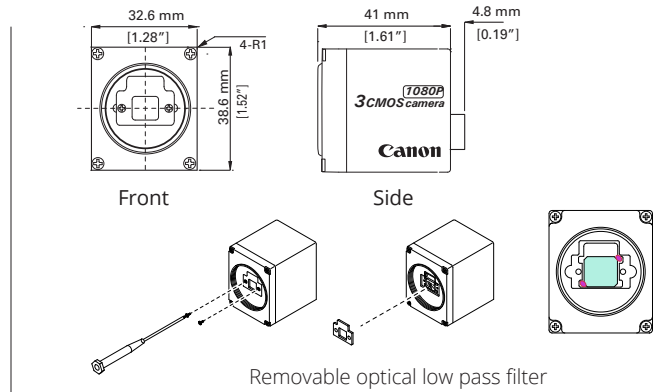
3-CMOS 1080p HD Video Camera

## Camera Head Specifications

### IK-HD5H

Image Sensor	3-CMOS, 1/2.9 inch, 2.1MP progressive
Output Resolution	Horizontal : 1920, Vertical : 1080
Resolution :H :V	1000 TV lines standard 1000 TV lines standard
Sensitivity	F10 standard (59.94 Hz setting) F11 standard (50 Hz setting) (at 2000 lx, 3000 K)
Minimum Illumination	4.8 lx (59.94 Hz setting) 4.0 lx (50 Hz setting) at F2.2, 20 dB, BINNING: ON 9.6 lx (59.94 Hz setting) 8.0 lx (50 Hz setting) at F2.2, 20 dB, BINNING: OFF
S/N Ratio	56 dB standard AGC: OFF, Gamma: OFF, Enhance: OFF
Operating Temperature	0 °C to 40 °C / 32 °F to 104 °F
Operating Humidity	Less than 90% (non-condensing)
Weight	Approx. 93 g (3.3 oz)
Dimensions	W: 32.6 mm H: 38.6 mm D: 41 mm (1.28" x 1.52" x 1.61") Protruding portion is not included

## Camera Head Exterior Dimensions



## Controller Specifications

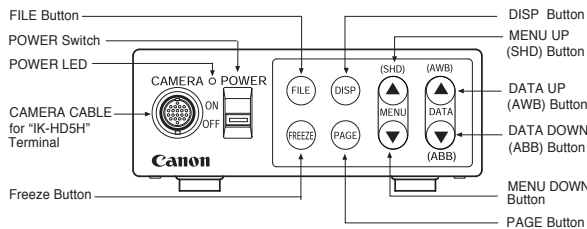
### IK-HD5E and IK-HD5U

Power Supply	12V DC±10%
Power Consumption	10.3 W
Scanning System	Progressive / Interlaced (Selectable)
Scan Frequency	H: 67.433 kHz, V:59.94 Hz :1080p / 59.94 Hz H: 56.250 kHz, V:50 Hz :1080p / 50 Hz H: 33.716 kHz, V:59.94 Hz :1080i / 59.94 Hz H: 28.125 kHz, V:50 Hz :1080i / 50 Hz
Operating Temperature	0 °C to 40 °C / 32 °F to 104 °F
Operating Humidity	Less than 90% (non-condensing)
Weight	Approx. 600 g (1.32 lbs.)
Dimensions	W: 110 mm, H: 40 mm, D: 186 mm (4.33" x 1.58" x 7.32")
Scene Files	5 User-configurable scene files
White Balance	Auto / Manual (Selectable)
Gain	Auto (-15dB to 20dB); Manual (-15dB to 20 dB), OFF
Output Signal	DVI-D / 3G-SDI or HD-SDI DVI-D / USB micro-B (IK-HD5U) 1920 x 1080 / 59.94fps max. USB3.0 1920 x 1080 / 10fps max. USB2.0
Electronic Shutter	Auto / Manual (OFF 1/60 - 1/10,000) / Syncro Scan

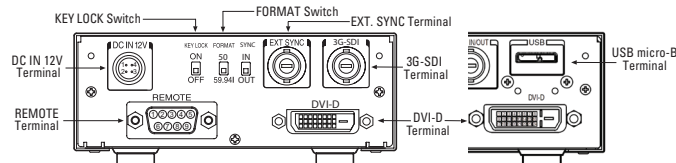
This product is marked with "CE" and therefore complies with the applicable harmonized European standards listed under the Directive 2014/30/EU and 2011/65/EU.

## Controller Front and Back Panels

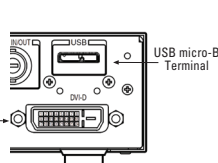
### IK-HD5 FRONT



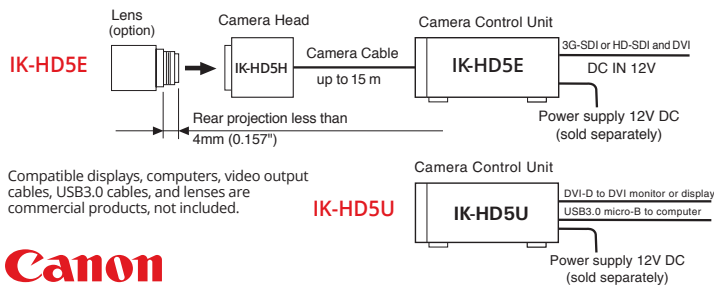
### IK-HD5E REAR



### IK-HD5U REAR



## Connection



Compatible displays, computers, video output cables, USB3.0 cables, and lenses are commercial products, not included.

IK-HD5U

Canon

CANON MEDICAL COMPONENTS EUROPE B.V. Video Sensing Devices  
Bovenkerkerweg 59, 1185 XB, Amstelveen, Netherlands

© 2023 CANON MEDICAL COMPONENTS EUROPE B.V. All rights reserved. All products and names mentioned are the property of their respective owners. While Canon has made every effort at the time of publication to ensure the accuracy of the information provided herein, product specifications, configurations, prices, system/component/options availability are all subject to change without notice. When used for medical imaging applications, the customer assumes full responsibility and liability to determine suitability for use as well as responsibility for documentation and testing to comply with relevant medical device standards. Canon assumes no liability for such applications.

## System Components

For further details, contact your Canon ME/FA distributor.

### CAMERA HEAD

IK-HD5H
---------

### CAMERA CABLE

Model	Length
EXC-3HD03	3 m
EXC-3HD06	6 m
EXC-3HD10	10 m
EXC-3HD15	15 m

### CAMERA CONTROL UNIT

IK-HD5E (DVI-D / 3G-SDI or HD-SDI)
IK-HD5U (DVI-D / USB3.0 micro-B)